

Lens Exchange Co-Management Protocol

Pre-Operative Care

Pre-Operative Examination

- » History: Chief Complaint (should emphasize ADL), Ocular Systemic Condition, Medications, Allergies
- » Spectacle Neutralization
- » Visual Acuity (standard procedure)
- » Manifest Refraction: Distance and Near
- » Best Corrected Visual Acuity
- » Glare Testing
- » Amsler Grid and Keratometry (quantitative and qualitative)
- » Topography
- » External Exam: Lids, Pupils, EOM, CF, Ocular Dominancy
- » Slit Lamp: Pre- and Post-Dilation Including Tear Film Assessment
- » Tonometry (applanation or non-contact)
- » Dilated Fundus Exam
- » Vital Signs: Blood Pressure, Pulse, Respiration, and Temperature

Indications

- » Decreased Visual Function (ADL, Glare Testing)
- » Ocular health is sufficient to expect improvement
- » Visual Necessity (amblyopia in child)
- » Medical (Phacolytic/Phacomorphic Glaucoma, Phacoanaphylaxis, etc)

Contraindications

- » Active Ocular Disease

In order to acquire the best measurements for the procedure, we ask that all contact lens wearers remove their contacts for a period of time depending upon which type of lens is worn:

Soft Lenses: no contacts 10 days before visit

Toric Lenses: no contacts 14 days before visit

Extended Wear: no contacts 30 days before visit

RGP Lenses: no contacts 30-90 days before visit

Corneal Mold Lenses: no contacts 90 days before visit

Post-Operative Care

One Day Examination

- » Best Corrected Visual Acuity
- » Slit Lamp: Wound Leakage (Seidel test), Corneal Edema, Cell and Flare, IOL Centration, Posterior Capsule Integrity
- » Applanation Tonometry
- » Non-dilated Fundus Exam: Choroidal Effusion, Retinal Detachments
- » Continue antibiotic and steroid QID. Add Muro128 if significant corneal edema. Consider anti-glaucoma medication if IOP is elevated.

One Week Examination

- » Same as One Day Exam, *excluding* Fundus Exam.
- » Discontinue antibiotic if stable. Taper steroid 1 gtt/week if no anterior chamber reaction.

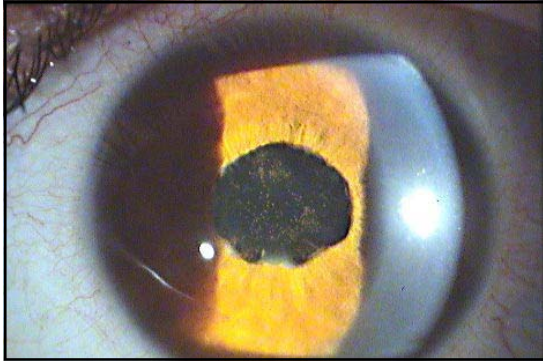
One Month Examination

- » Same as One Day Exam, including Fundus Exam.

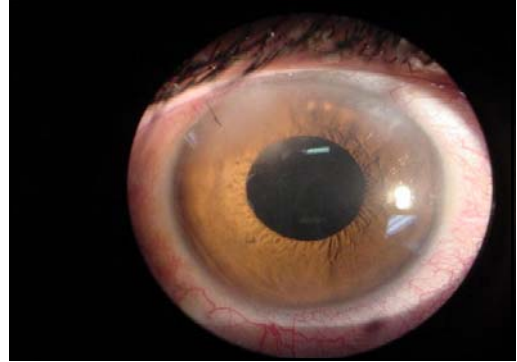
Three Month Examination

- » Same as One Month Exam.

Possible Lens Exchange Complications



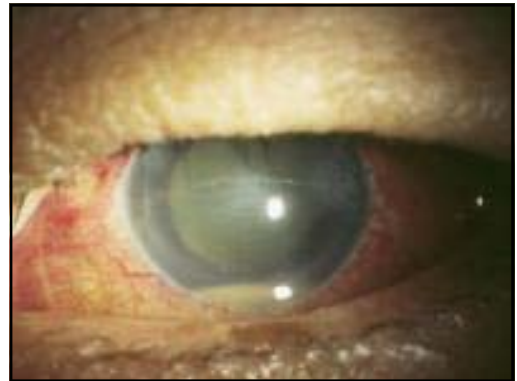
Iritis with Posterior Synechiae



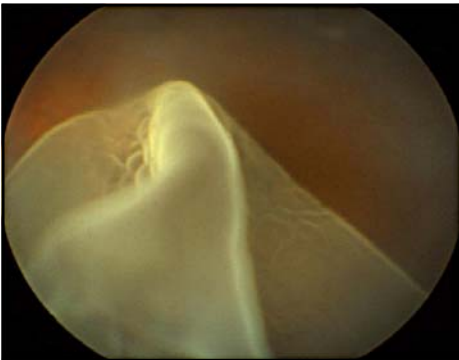
Mild Corneal Edema, PO Day 1



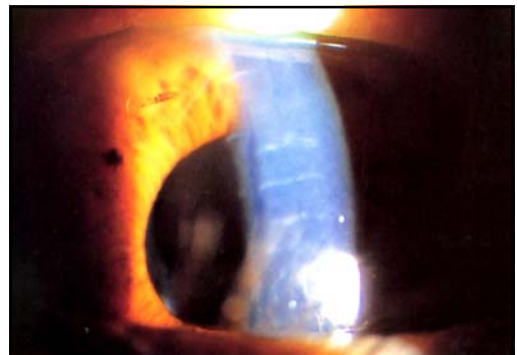
Nucleus Dislocation



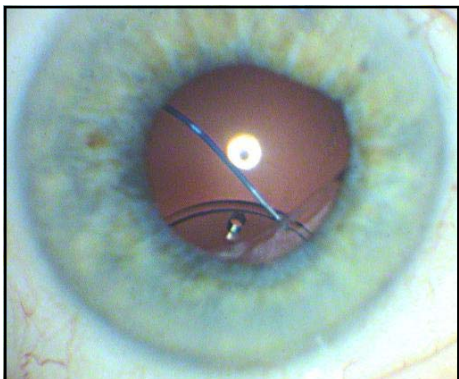
Hypopyon 3 days after phaco



Giant Retinal Tear



Descemet's Detachment



Subluxed IOL

Remember to call if...

Redness

Sensitivity to Light

Vision Decrease

Pain

901-683-4600

